

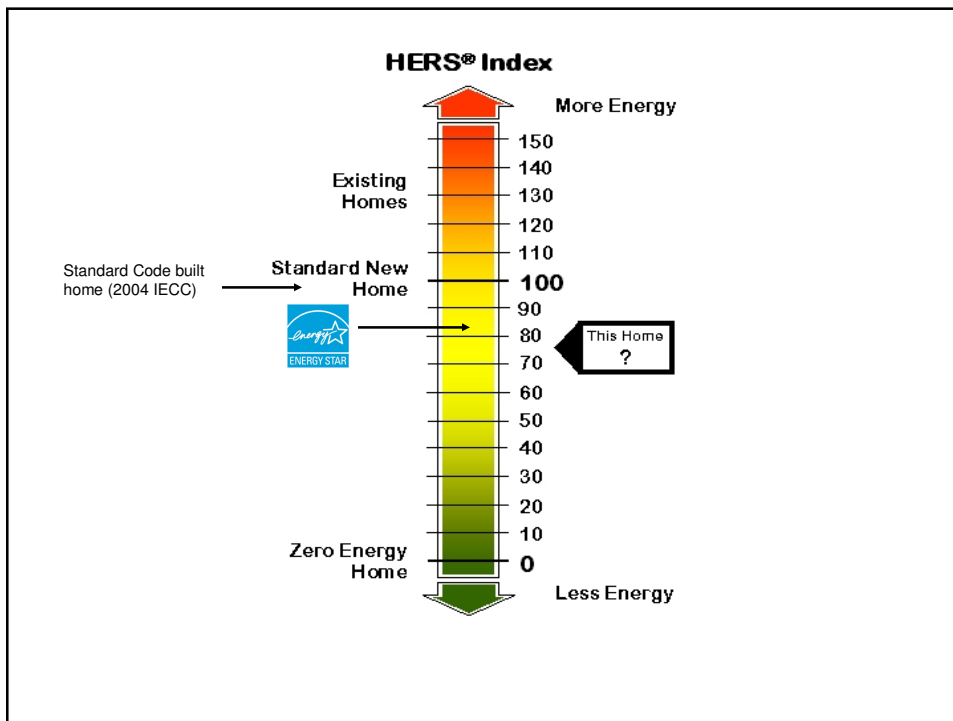
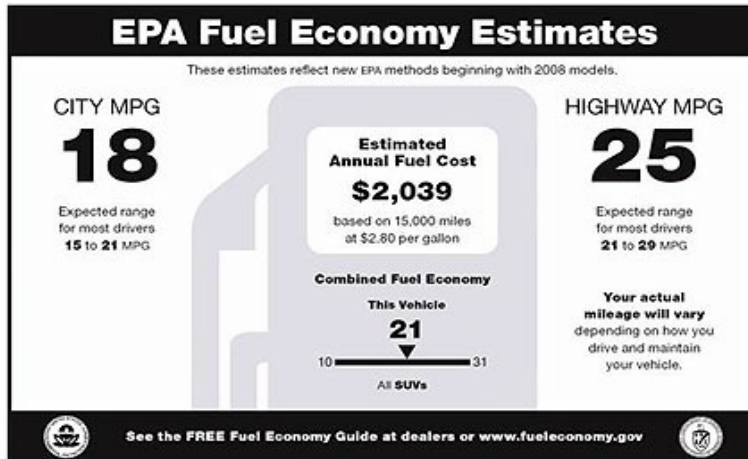


Defining Home Performance

Energy Efficiency & Green Homes

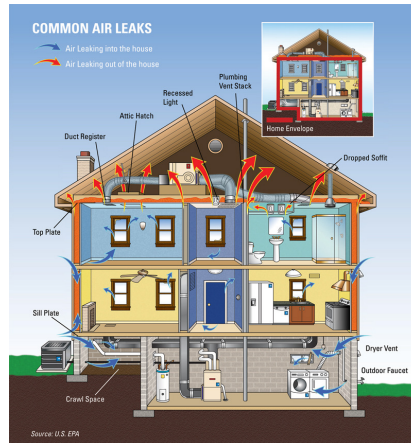
Pop Quiz

1. Please select a Green Building Program you have previously worked with
 - a. LEED for Homes
 - b. Earthcraft
 - c. N.C. Healthy Built Homes
 - d. Energy Star
2. The current method for rating the efficiency of a home is
 - a. Energy Score
 - b. HERS Index
 - c. Energy Index
 - d. Carbon Emissions Statement
3. True or False: Energy Star Homes require all Energy Star Products.
4. True or False: You can make a house too air tight
5. I have the following problems in my house
 - a. Comfort, drafty rooms
 - b. Mold, Moisture
 - c. Loud HVAC system, whistling grills
 - d. High Energy Bills
 - e. All of the Above
6. HVAC operation accounts for _____ % of our annual utility bill.
 - a. 30%
 - b. 40%
 - c. 50%
 - d. 60%
7. True or False: Energy Star is a Green Building program



2 Fundamentals of Energy Efficiency

1. Stopping the Transfer of Air



2 Fundamentals of Energy Efficiency

2. Slowing the transfer of Heat (think in and out)



Effective Insulation

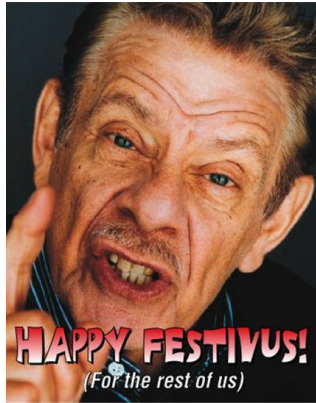


Non-Effective Insulation



Do We Need HVAC?

Passivhaus



not Festivus

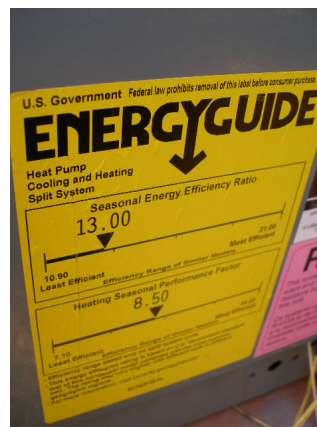
High Performance HVAC

High SEER, AFUE,
HSPF

SEER – Rating for
A/C

AFUE – Rating for
Gas Furnaces

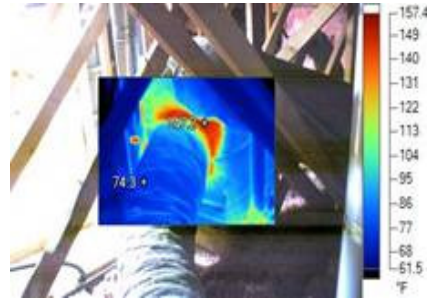
HSPF – Rating for
Heat Pumps



High Performance HVAC

Tight Ductwork

- Prevents air from being pulled from attic, crawl and basements
- Tested using a duct blaster
- Energy Star $\leq 6\%$ of Floor Area



Wait!?

Can't you get a House *Too* Tight?

NO !

“Build Tight, Ventilate Right”

Independent 3rd Party Inspector



Similarities Among EE & Green

- Hire 3rd party consultants
- Higher level of building a home (costs & performance)
- EE=Green?
- Sustainable

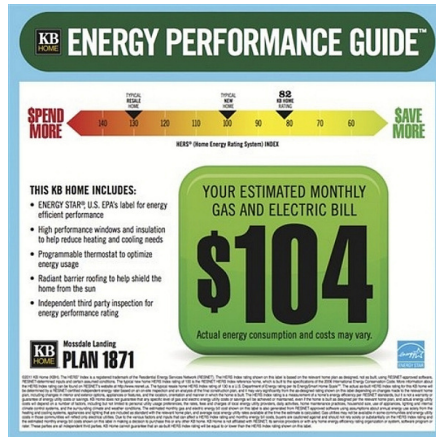
What Green is that EE isn't

- Durability
- More Focus on Indoor Air
- Resource Efficiency
- Waste Management
- Bleeds into community development
- Water Efficiency
- Advanced?

What this means for Realtors and Lenders

- More info in tough times
- Those who understand and can interpret will be market leaders
- Why? Because of Competition

Market Trends?



[US Falling Behind in Business of Green](#)

[City Of Austin Resolution on Existing Homes](#)

Panelist

Danny Kelly – [Kelly McArdle Construction](#)

(704) 363-6467 dkelly@kellymcardle.com

Jim Barnaba – [James Custom Homes](#)

(704) 351-9521 jim.barnaba@jamescustomhomes.com

John Ring – [American Building Diagnostics](#)

(704) 375-0011 multispect@gmail.com

Matt Ryan – [Efficiency First, LLC](#)

(704) 218-9671 efficiency1st@gmail.com