



# THE ECONOMIC ENGINE OF THE CAROLINAS: PLANNING FOR THE FUTURE



# Fast Facts



## ABOUT CLT AIRPORT

TERMINAL OPENED  
**MAY 2, 1982**

**97**  
GATES (CAN PARK 102 AIRCRAFT)



**1,400**  
DAILY AIRCRAFT MOVEMENTS

**122,000**  
DAILY PASSENGERS

**100+**  
CONCESSIONS

**27,500+**  
PARKING SPACES

**FOUR**  
TOTAL RUNWAYS

**6,000**  
ACRES OF LAND

**1.8M Sq. Ft.**  
TERMINAL WITH 5 CONCOURSES



**x 100+**  
IN THE TERMINAL



## NUMBERS & RANKINGS

**45,909,899**  
PASSENGERS



**553,812**  
AIRCRAFT MOVEMENTS



**3,305,649**  
INTERNATIONAL PASSENGERS

**191,612**  
TONS OF CARGO



## 2017 ACI RANKINGS\*

**6<sup>th</sup>** IN AIRCRAFT  
MOVEMENTS

**10<sup>th</sup>** IN TOTAL  
PASSENGERS

**34<sup>th</sup>** IN TOTAL  
CARGO

Source: Airports Council International (ACI) 2017 rankings.

\*Nationwide

\*2017 ACI preliminary rankings.

CLT is financially self-sustaining. No general fund revenues are appropriated to the facilities or operation.



## ECONOMIC IMPACT

**\$16.2B** \$   
ANNUAL ECONOMIC IMPACT



**224,410**   
FULL-TIME JOBS SUPPORTED

**\$11.52B**  
PAYROLL GENERATED



## AIRLINES

**170**  
NONSTOP  
DESTINATIONS

**34**  
INTERNATIONAL  
DESTINATIONS



**THREE**   
US TERRITORIES

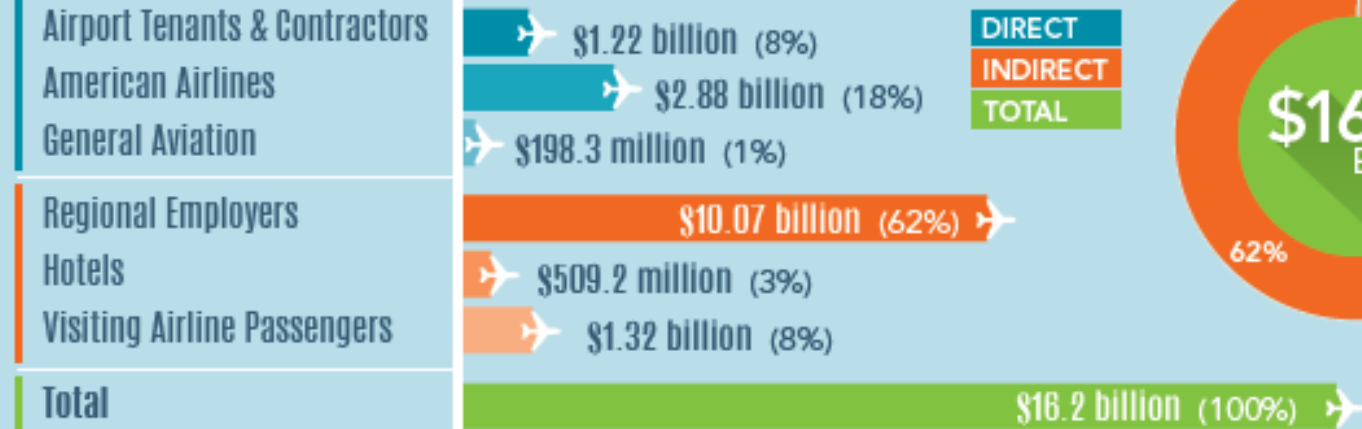
**SEVEN**   
DOMESTIC AIRLINES

**TWO**   
FOREIGN FLAG AIRLINES

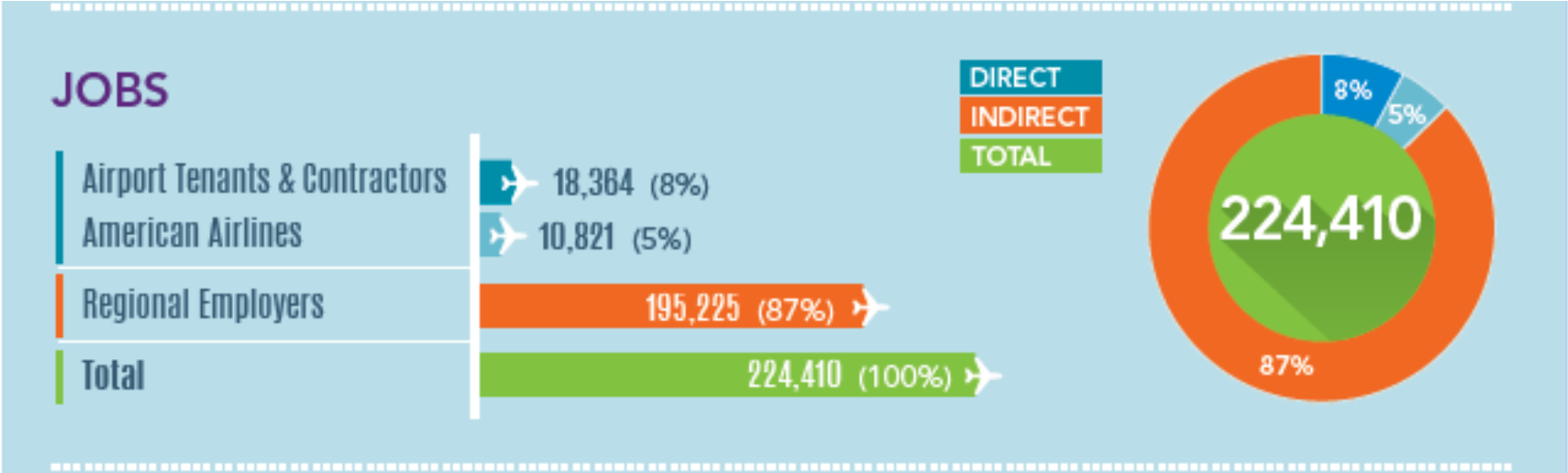


# Economic Engine

## ECONOMIC IMPACT



# Economic Engine



# DESTINATION CLT: GROWING THE ECONOMIC PLATFORM



# Concourse A Expansion

**Status:** Opened July 2018





# Concourse A Expansion

**Status:** Opened July 2018



# Terminal Renovations

**Status:** Underway; scheduled completion Fall 2020





# Terminal Renovations

**Status:** Underway; scheduled completion Fall 2020



# Elevated Roadway and Terminal Curb Front

**Status:** Under construction; scheduled completion Summer 2019





# Elevated Roadway and Terminal Curb Front

**Status:** Under construction; scheduled completion Summer 2019



# DESTINATION CLT: UPCOMING PROJECTS



# Terminal Lobby Expansion

**Status:** Design Underway; scheduled completion 2024





# Terminal Lobby Expansion

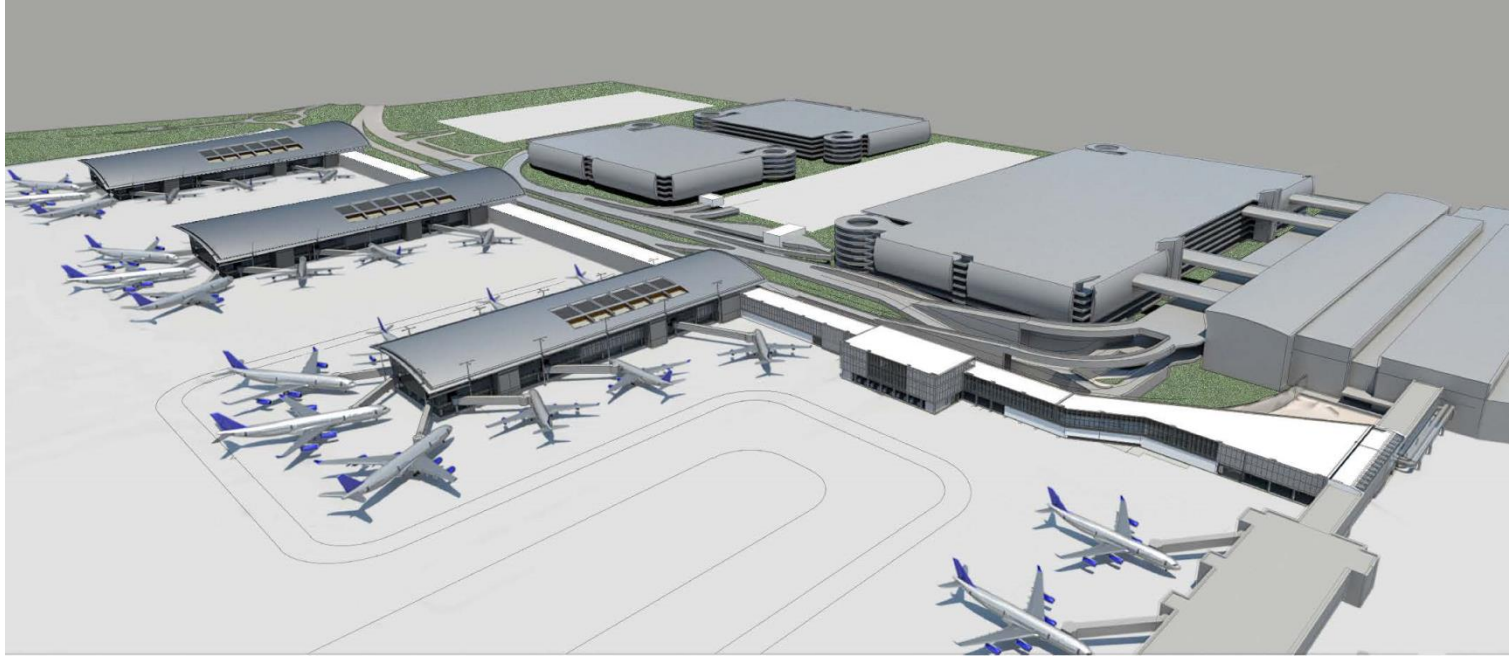
**Status:** Design Underway; scheduled completion 2024





# Concourse A – Phases 2 & 3

**Status:** Design Team Selected; Estimate 3-5 years for full build-out



# 4<sup>th</sup> Parallel Runway

**Status:** EIS Underway; Estimated Commissioning in 2024



# PROJECT AMP OVERVIEW

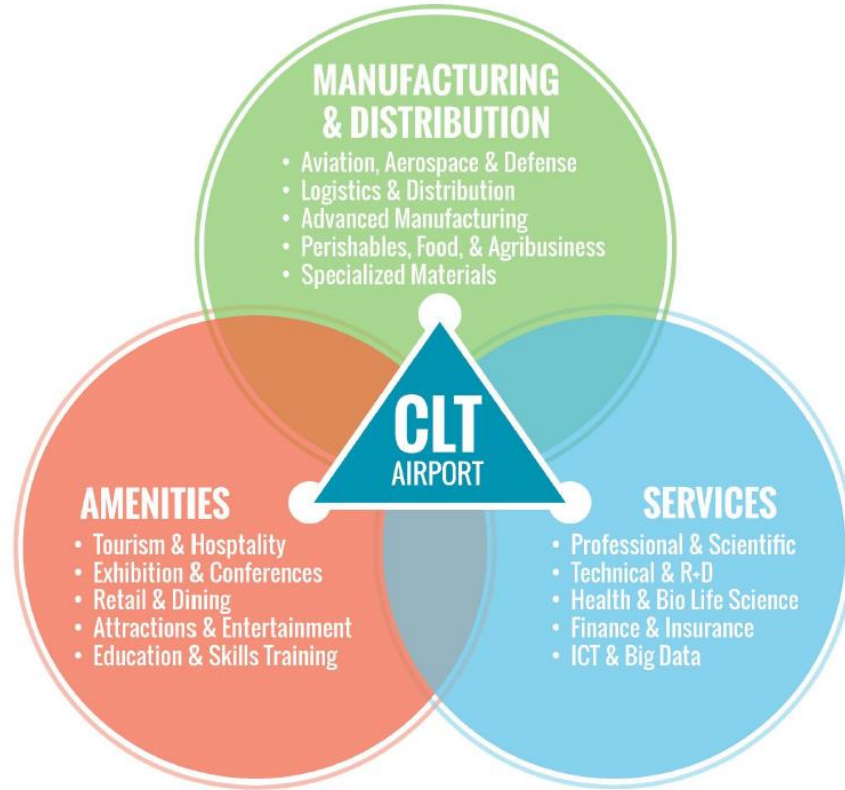


# Project AMP Background

- FAA guidelines establish three primary objectives for Airport commercial development
  - Financial self-sustainability, land re-use, & compatible land use
- Project examined ~ 2,000 acres of Airport-owned land not needed for Airport expansion of the airfield and terminal areas
- Majority of the 2,000 acres purchased due to negative noise impacts
- Aviation Department finalized AASDP March 2017
- Airport is focused on commercial development of the properties



# CLT AASDP STUDY AREA TARGET ECONOMIC CLUSTERS





#### CLT Gateway Development District

##### Airport Connected Development Opportunities:

- Airport Gateway Enhancement Catalyst Projects.
- Airport Community Retail & Service Hub.
- Walkable Mixed-Use Office District.
- Station(s) for a Future Wilkinson Corridor LRT line to Uptown.
- Hospitality District with Hotel, Food & Beverage, and Convenience Retail.
- Office Business Park.

##### Compatible Future Development Opportunities:

- Hotels.
- Convenience Retail.
- Food & Beverage.
- Services.
- Office.
- Exhibition and meeting facilities.

#### CLT Airside Development District

##### Airport Connected Development Opportunities:

- Expanded Aviation Uses.
- Consolidated Parking.
- Automated People Mover.
- Air Cargo & Integrator Facilities.
- Airside Warehouse & Logistics.
- Terminal Hotel.
- Secure "inside-the-fence" development sites.

#### I-485 West Development District

##### Airport Connected Development Opportunities:

- Logistics & Distribution development.
- Office-Business Park development.
- Entrepreneurial "Flex" Office-Light Industrial development.
- Convenience Retail.

##### Compatible Future Development Opportunities:

- Logistics & Distribution.
- Office-Business Park.
- Entrepreneurial "Flex" Office-Light Industrial development.
- Convenience Retail.
- Community Services.
- Mixed-Use Development.

#### Billy Graham Corridor Development District

##### Airport Connected Development Opportunities:

- Expanded Education and Skills Training.
- Convenience Retail.
- Entrepreneurial "Flex" Office-Light Industrial development.
- Self-Storage.
- Warehousing & Small-Scale Distribution.

##### Compatible Future Development Opportunities:

- Aviation support.
- Logistics & Distribution.
- Convenience Retail.
- Professional Services.
- Entrepreneurial "Flex" Office-Light Industrial development.

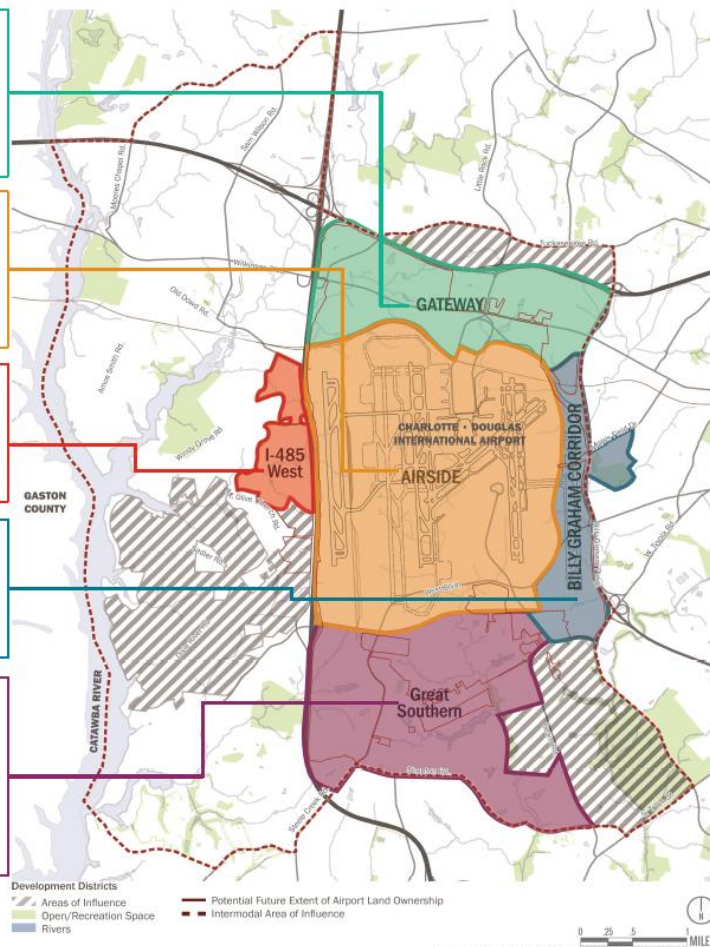
#### Great Southern Development District

##### Airport Connected Development Opportunities:

- Multi-Modal Logistics & Distribution.
- Advanced Manufacturing.
- Defense & Military.
- Bio-Life Sciences.
- Value-Add Precinct.
- Office-Business Park Development to expand Coliseum Node.
- Convenience Retail Hub.
- Entrepreneurial "Flex" Office-Light Industrial Development.
- Education & Skills Training.
- Hotel Accommodation.

##### Compatible Future Development Opportunities:

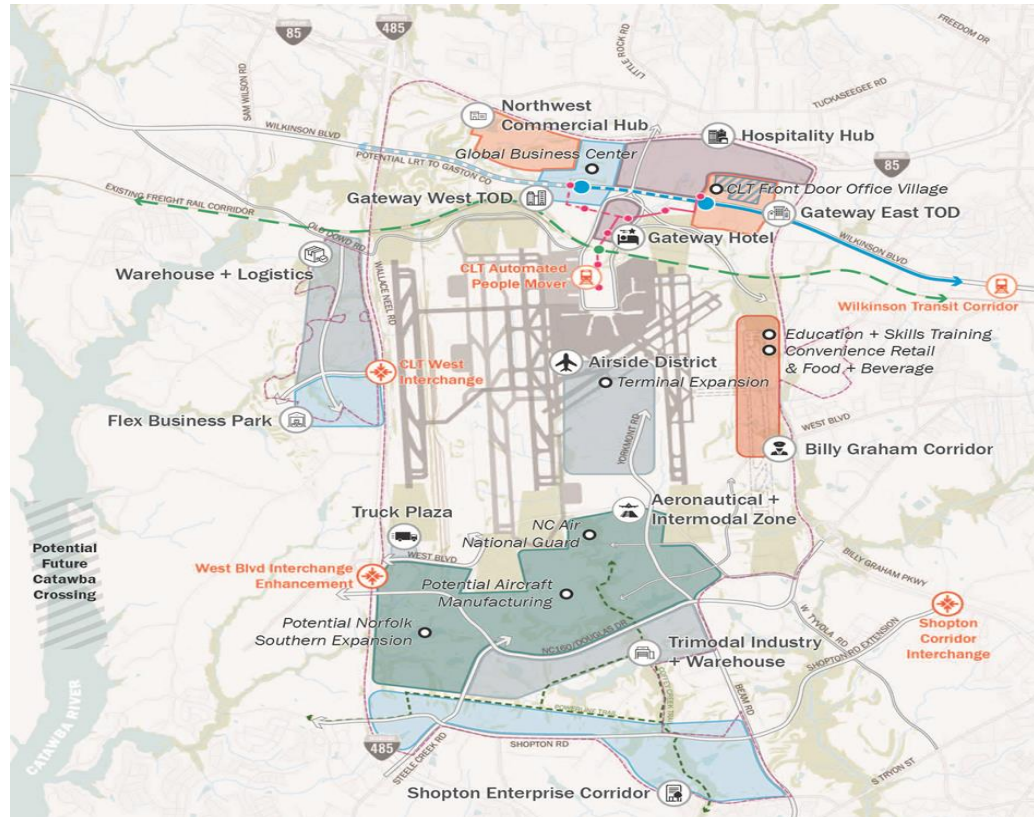
- Logistics & Distribution.
- Office-Business Park.
- Convenience Retail.
- Entrepreneurial "Flex" Office-Light Industrial development.
- Hotel Accommodation.



PLANNING AND RECREATION DIVISION, METRO CHARLOTTE REGIONAL GOVERNMENT, 2014



# OVERALL DEVELOPMENT STRATEGY



## Legend

- Office/Business Park
- Industrial
- Hospitality + Tourism
- Retail/TOD
- Catalyst Project
- Existing Corridor
- Proposed Corridor
- Potential Light Rail (LRT)
- Potential LRT Transit Stop
- Potential Automated People Mover (APM)
- Potential CLT APM Stop
- Potential High-speed Rail Line (HRL)
- Potential HRL Station
- - - Greenway Trail
- ⊗ Potential Interchange
- ⊗ Arrival Enhancements



CONNECTING THE CAROLINAS TO THE WORLD

[www.cltairport.com](http://www.cltairport.com)

