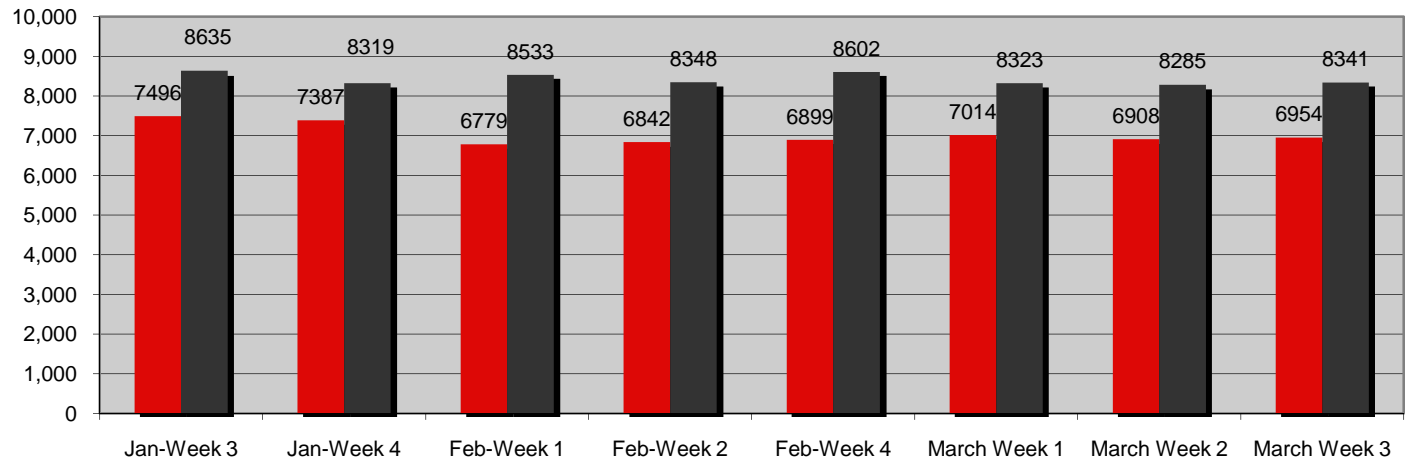


Realtors® and Designated Realtor: CMLS Member Participants and Subscribers

Jan-Week 2	7515	8699
Jan-Week 3	7496	8635
Jan-Week 4	7387	8319
Feb-Week 1	6779	8533
Feb-Week 2	6842	8348
Feb-Week 4	6899	8602
March Week 1	7014	8323
March Week 2	6908	8285
March Week 3	6954	8341

2010 Association Realtors®/Designated Realtors® and CMLS Member Participants/Subscribers



■ Realtors® and Designated Realtors®

■ CMLS Member Participants and Subscribers

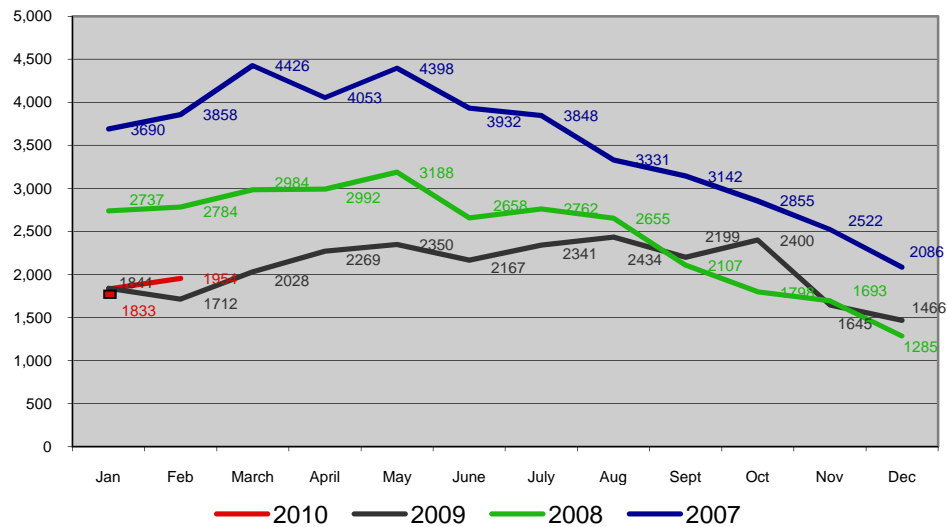
■ Realtors® and Designated Realtors®

■ CIVIL member Participants and Subscribers

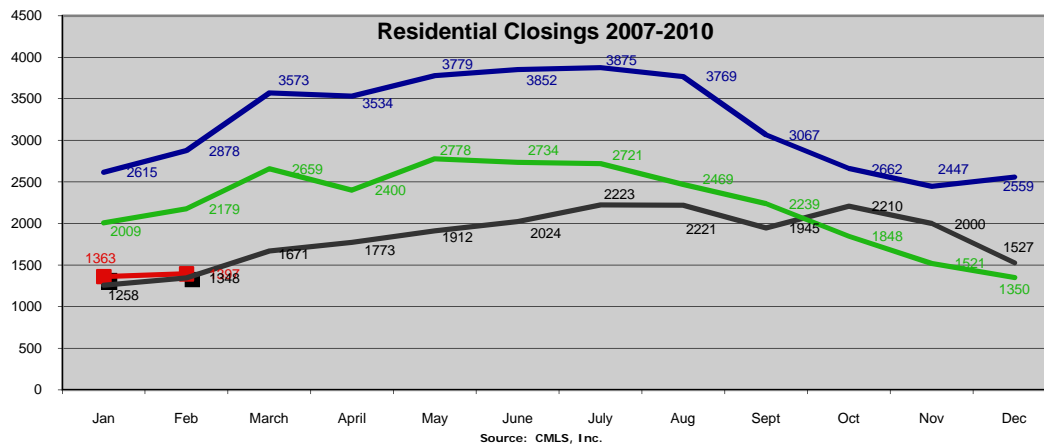
Residential Contracts Reported

	2010	2009	2008	2007
Jan	1833	1841	2737	3690
Feb	1954	1712	2784	3858
March		2028	2984	4426
April		2269	2992	4053
May		2350	3188	4398
June		2167	2658	3932
July		2341	2762	3848
Aug		2434	2655	3331
Sept		2199	2107	3142
Oct		2400	1798	2855
Nov		1645	1693	2522
Dec		1466	1285	2086
		24852	29643	42141

Residential Contracts Reported 2007-2010



	2010	2009	2008	2007
Jan	1363	1258	2009	2615
Feb	1397	1348	2179	2878
March		1671	2659	3573
April		1773	2400	3534
May		1912	2778	3779
June		2024	2734	3852
July		2223	2721	3875
Aug		2221	2469	3769
Sept		1945	2239	3067
Oct		2210	1848	2662
Nov		2000	1521	2447
Dec		1527	1350	2559
		22112	26907	38610

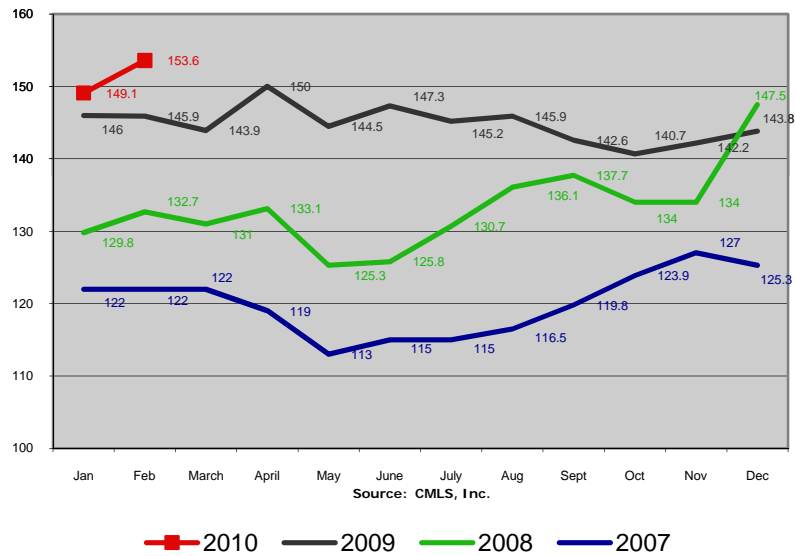


■ 2010
 ■ 2009
 ■ 2008
 ■ 2007

List to Close

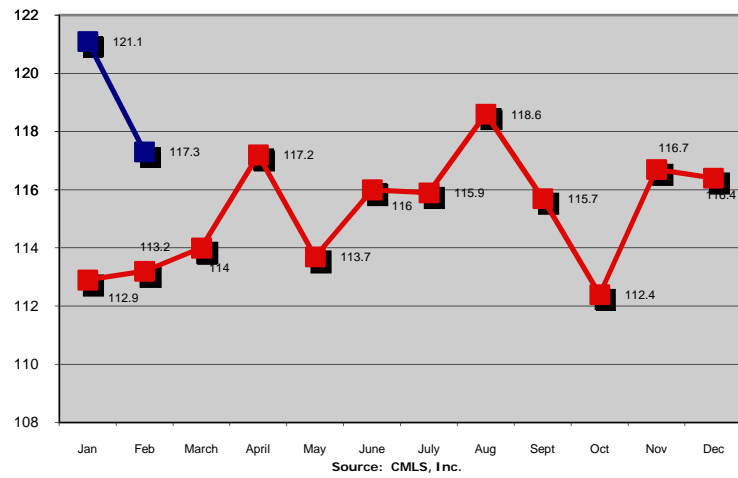
	2010	2009	2008	2007
Jan	149.1	146	129.8	122
Feb	153.6	145.9	132.7	122
March		143.9	131	122
April		150	133.1	119
May		144.5	125.3	113
June		147.3	125.8	115
July		145.2	130.7	115
Aug		145.9	136.1	116.5
Sept		142.6	137.7	119.8
Oct		140.7	134	123.9
Nov		142.2	134	127
Dec		143.8	147.5	125.3

List to Close - 2007-2010



	2010	2009
Jan	121.1	112.9
Feb	117.3	113.2
March		114
April		117.2
May		113.7
June		116
July		115.9
Aug		118.6
Sept		115.7
Oct		112.4
Nov		116.7
Dec		116.4

Days on Market - 2009 to 2010

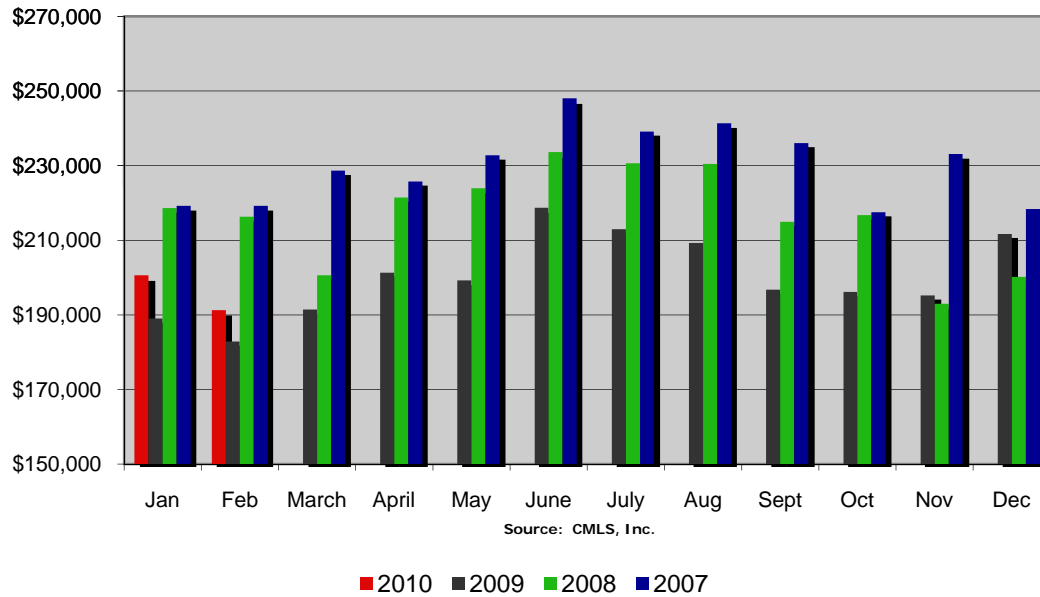


■ 2010 ■ 2009

Source: CMLS, Inc.

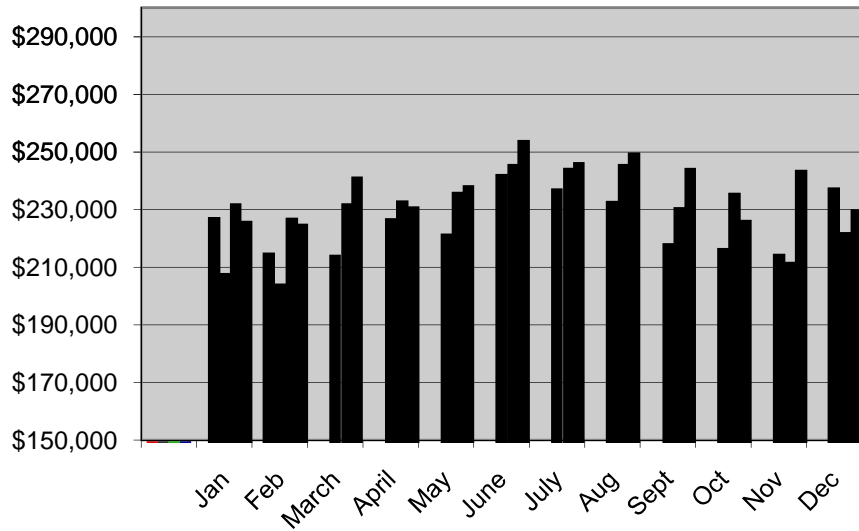
	2010	2009	2008	2007
Jan	200592	189048	218610	219270
Feb	191288	182865	216292	219215
March		191433	200620	228665
April		201352	221497	225748
May		199243	223946	232747
June		218728	233670	248048
July		212977	230632	239172
Aug		209245	230472	241323
Sept		196760	214927	236061
Oct		196204	216777	217504
Nov		195244	193035	233141
Dec		211705	200226	218399

Average Sales Price - 2007-2009



	2010	2009	2008	2007
Jan	229214	209711	233648	227534
Feb	216605	206172	228916	226549
March		216135	233882	242742
April		228550	235127	232580
May		223470	237884	239961
June		244316	248044	255924
July		238629	246128	248057
Aug		234504	247323	251164
Sept		219925	232717	245782
Oct		218050	237436	228082
Nov		216507	213548	245237
Dec		239062	223746	231756

Average List Price of Solds - 2007 to 2010



Source: CMLS, Inc.

■ 2010

■ 2009

■ 2008

■ 2007

Active Listings (listings pending are excluded) in CMLS

Jan-13	
Feb-13	
Mar-13	
Apr-13	
May-13	
Jun-13	
Jul-13	
Aug-13	
Sep-13	
5-Oct-09	23850
5-Nov-09	23317
5-Dec-09	21727
5-Jan-10	23225
5-Feb-10	24043

Active Listings - October 2009 - February 2010

